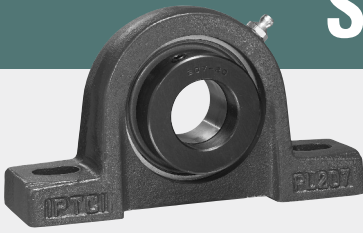


SAPL Pillow Blocks

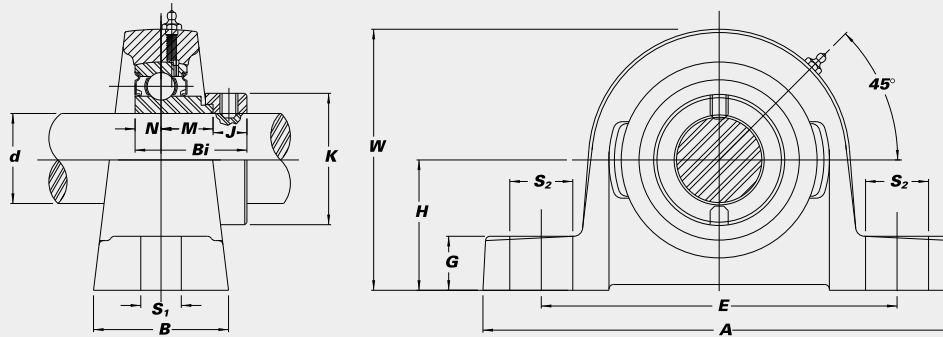


Low shaft height with eccentric locking collar.

- Cast iron housing
- K-type seals
- Narrow inner race bearing



K-type Seal



Unit No.	Shaft Dia.		Dimensions (in.) (mm)											Bolt Used (in.)	Bearing No.	Housing No.	Weight (lbs.)		
	d (in.)	d (mm)	H	A	E	B	S ₂	S ₁	G	W	Bi	N	M					J	K
SAPL 201		12															SA 201G		
201-8	1/2	15	1 ¹ / ₁₆	4 ⁷ / ₈	3 ⁵ / ₈	1 ⁷ / ₁₆	3/4	7/16	1 ¹ / ₃₂	2 ¹⁵ / ₆₄	1.1260	0.2559	0.4960	0.3740	1.1260	3/8	SA 201-8G	PL 203	1.5
202		27	124	92	37	19	11	13	57	28.6	6.5	12.6	9.5	28.6		SA 202G			
202-10	5/8	17														SA 202-10G			
203																SA 203G			
SAPL 204-12	3/4	20	1 ¹ / ₄	5	3 ³ / ₄	1 ¹ / ₂	9/16	7/16	9/16	2 ¹ / ₂	1.2205	0.2953	0.5512	0.3740	1.3110	3/8	SA 204-12G	PL 204	1.7
204		31.8	127	95	38	14	11	14	64	31.0	7.5	14.0	9.5	33.3		SA 204G			
SAPL 205-14	7/8	25	1 ⁹ / ₁₆	5 ¹ / ₂	4 ¹ / ₈	1 ¹ / ₂	1 ¹ / ₁₆	7/16	5/8	2 ⁴⁵ / ₆₄	1.2205	0.2953	0.5513	0.3740	1.5000	3/8	SA 205-14G	PL 205	2.0
205-15	1 ¹ / ₁₆	33.3	140	105	38	18	11	16	69	31.0	7.5	14.0	9.5	38.1		SA 205-15G			
205																SA 205G			
205-16	1																SA 205-16G		
SAPL 206-17	1 ¹ / ₁₆	30	1 ⁹ / ₁₆	6 ¹¹ / ₃₂	4 ³ / ₄	1 ³ / ₄	1 ³ / ₁₆	9/16	1 ¹ / ₁₆	3 ⁵ / ₃₂	1.4055	0.3543	0.5827	0.4685	1.7520	1/2	SA 206-17G	PL 206	3.0
206-18	1 ¹ / ₈	39.7	161	121	45	21	14	18	80	35.7	9.0	14.8	11.9	44.5		SA 206-18G			
206																SA 206G			
206-19	1 ³ / ₁₆																SA 206-19G		
206-20	1 ¹ / ₄ S																SA 206-20G		
SAPL 207-20	1 ¹ / ₄	35	1 ¹³ / ₁₆	6 ¹⁹ / ₃₂	5	1 ⁷ / ₈	7/8	9/16	2 ⁵ / ₃₂	3 ²¹ / ₃₂	1.5315	0.3740	0.6260	0.5315	2.1890	1/2	SA 207-20G	PL 207	4.0
207-21	1 ⁵ / ₁₆	46.0	167	127	48	22	14	20	93	38.9	9.5	15.9	13.5	55.6		SA 207-21G			
207-22	1 ³ / ₈																SA 207-22G		
207																	SA 207G		
207-23	1 ⁷ / ₁₆																SA 207-23G		
SAPL 208-24	1 ¹ / ₂	40	1 ¹⁵ / ₁₆	7 ¹ / ₈	5 ⁷ / ₁₆	2	7/8	9/16	1 ³ / ₁₆	4	1.7205	0.4331	0.7559	0.5315	2.3740	1/2	SA 208-24G	P 208	5.0
208-25	1 ⁹ / ₁₆	49.2	181	137	51	22	14	21	102	43.7	11.0	19.2	13.5	60.3		SA 208-25G			
208																	SA 208G		
SAPL 209-26	1 ⁵ / ₈	45	2 ¹ / ₁₆	7 ¹ / ₂	5 ³ / ₄	2 ¹ / ₈	1 ³ / ₁₆	9/16	2 ⁹ / ₃₂	4 ⁷ / ₃₂	1.7205	0.4331	0.7559	0.5315	2.5000	1/2	SA 209-26G	PL 209	6.1
209-27	1 ¹¹ / ₁₆	52.4	191	146	54	20	14	23	107	43.7	11.0	19.2	13.5	63.5		SA 209-27G			
209-28	1 ³ / ₄																SA 209-28G		
209																	SA 209G		
SAPL 210-30	1 ⁷ / ₈	50	2 ³ / ₁₆	8 ¹ / ₃₂	6 ¹ / ₄	2 ¹ / ₄	1 ⁵ / ₁₆	1 ¹ / ₁₆	2 ⁹ / ₃₂	4 ²⁹ / ₆₄	1.7205	0.4331	0.7559	0.5315	2.7520	5/8	SA 210-30G	PL 210	6.7
210-31	1 ¹⁵ / ₁₆	55.6	204	159	57	24	18	23	113	43.7	11.0	19.2	13.5	69.9		SA 210-31G			
210																	SA 210G		
210-32	2S																	SA 210-32G	
SAPL 211-32	2	55	2 ¹ / ₁₆	8 ⁵ / ₈	7	2 ³ / ₈	1 ⁵ / ₁₆	1 ¹ / ₁₆	1	4 ⁶¹ / ₆₄	1.9055	0.4724	0.8031	0.6299	3.0000	5/8	SA 211-32G	PL 211	8.8
211-34	2 ¹ / ₈	61.9	219	178	60	24	18	25.4	126	48.4	12.0	20.4	16.0	76.2		SA 211-34G			
211																	SA 211G		
211-35	2 ³ / ₁₆																SA 211-35G		

Interchange Page 47