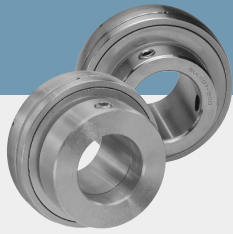


# Stainless Steel Bearing Inserts



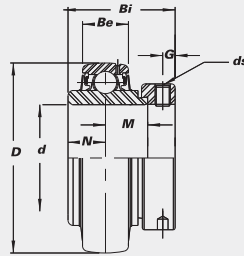
B-type Seal

B-type seal available in all styles and sizes.



L3-type Seal

L3-type seal available in limited sizes for SUC and SNA. Consult IPTCI for speed limitations.



SNA

## SNA with Eccentric Locking Collar

Balls & Rings	440 Stainless Steel
Seal	Silicone Rubber
Seal Frame & Slinger	302 Stainless Steel
Retainer	302 Stainless Steel
Set Screws	410 Stainless Steel
Locking Collar (SNA only)	304 Stainless Steel
Lubrication	H-1 Food Grade Grease

CORROSION RESISTANT

## SNA with Eccentric Locking Collar

SNA 204-12 204	3/4	20	1.8504 47.0	1.5433 39.2	0.6299 16.0	0.5000 12.7	0.6693 17.0	0.1890 4.8	1/4-28UNF	2,440	1,220	0.45 0.43
SNA 205-14 205 205-16	7/8 1	25	2.0472 52.0	1.6220 41.2	0.6693 17.0	0.5630 14.3	0.6850 17.4	0.1890 4.8	1/4-28UNF	2,670	1,440	0.58 0.49 0.49
SNA 206-18 206 206-19 206-20	1 1/8 1 3/16 1 1/4S	30	2.4409 62.0	1.8110 46.0	0.7480 19.0	0.6260 15.9	0.7165 18.2	0.2362 6.0	5/16-24UNF	3,710	2,020	0.89 0.84 0.84 0.76
SNA 207-20 207-22 207 207-23	1 1/4 1 3/8 1 7/16	35	2.8346 72.0	1.9606 49.8	0.7874 20.0	0.6890 17.5	0.7402 18.8	0.2677 6.8	5/16-24UNF	4,930	2,780	1.44 1.28 1.28 1.22
SNA 208-24 208	1 1/2	40	3.1496 80.0	2.1220 53.9	0.8268 21.0	0.7480 19.0	0.8425 21.4	0.2677 6.8	5/16-24UNF	5,660	3,300	1.75 1.64
SNA 209-28	1 3/4		3.3465 85.0	2.1220 53.9	0.8661 22.0	0.7480 19.0	0.8425 21.4	0.2677 6.8	5/16-24UNF	6,230	3,680	1.83
SNA 210-31 210-32	1 15/16 2S		3.5433 90.0	2.2480 57.1	0.9449 24.0	0.7480 19.0	0.9685 24.6	0.2677 6.8	5/16-24UNF	6,590	4,070	2.19 2.07