

SUCSP & SNASP Pillow Blocks

All Stainless Steel



B-type seal available in all styles and sizes.

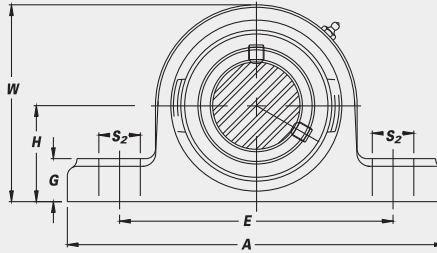
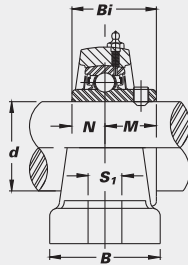


L3-type seal available in SUC units only. Limited sizes. Consult IPTCI for speed limitations.



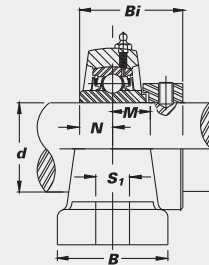
SUCSP

- Set Screw Locking



SNASP

- With Eccentric locking Collar



Unit No.	Shaft Dia.		Dimensions (in.) (mm)										Bolt Used (in.)	Bearing No.	Housing No.	Weight (lbs.)	
	d (in.)	d (mm)	H	A	E	B	S ₂	S ₁	G	W	Bi	N					M
SUCSP Set Screw Type																	
SUCSP 201-8	1/2	12.7	15/16	5	3 3/4	1 1/2	11/16	7/16	19/32	2 9/16	1.2205	0.5000	0.7205	3/8	SUC 201-8	SP 204	1.8
SUCSP 202-10	5/8	15.9	33.3	127	95	38	17	11	15	65	31.0	12.7	18.3	SUC 202-10	SP 204	1.8	
SUCSP 204-12	3/4	19.0	33.3	127	95	38	17	11	15	65	31.0	12.7	18.3	SUC 204-12	SP 204	1.6	
SUCSP 205-14	7/8	22.1	36.5	139	105	38	17	13	16	70	34.0	14.3	19.7	SUC 205-14	SP 205	2.1	
SUCSP 206-18	1 1/8	25.4	42.9	163	121	47	21	14	18	84	38.1	15.9	22.2	SUC 206-18	SP 206	3.3	
SUCSP 207-20	1 1/4	28.6	47.6	166	127	48	22	14	19	94	42.9	17.5	25.4	SUC 207-20	SP 207	4.2	
SUCSP 208-24	1 1/2	31.8	49.2	184	136	51	22	14	20	100	49.2	19.0	30.2	SUC 208-24	SP 208	5.4	
SUCSP 209-27	1 3/4	35.0	54.0	190	146	52	21	15	20	107	49.2	19.0	30.2	SUC 209-27	SP 209	5.8	
SUCSP 210-31	1 7/8	38.1	57.2	203	159	59	24	18	22	114	51.6	19.0	32.6	SUC 210-31	SP 210	7.0	
SUCSP 211-32	2	41.3	63.5	217	174	60	24	18	22	125	55.6	22.2	33.4	SUC 211-32	SP 211	8.8	
SUCSP 212-36	2 1/4	44.5	69.8	240	187	64	25	20	25	137	65.1	25.4	39.7	SUC 212-36	SP 212	11.2	
SNASP Eccentric Locking Collar Type																	
SNASP 204-12	3/4	19.0	33.3	127	95	38	17	11	15	65	39.2	12.7	17.0	SNA 204-12	SP 204	1.7	
SNASP 205-14	7/8	22.1	36.5	139	105	38	17	13	16	70	41.2	14.3	17.4	SNA 205-14	SP 205	2.2	
SNASP 206-18	1 1/8	25.4	42.9	163	121	47	21	14	18	84	46.0	15.9	18.2	SNA 206-18	SP 206	3.4	
SNASP 207-20	1 1/4	28.6	47.6	166	127	48	22	14	19	94	49.8	17.5	18.8	SNA 207-20	SP 207	4.4	
SNASP 208-24	1 1/2	31.8	49.2	184	136	51	22	14	20	100	53.9	19.0	21.4	SNA 208-24	SP 208	5.6	
SNASP 209-28	1 3/4	35.0	54.0	190	146	52	21	15	20	107	53.9	19.0	21.4	SNA 209-28	SP 209	6.1	
SNASP 210-31	1 7/8	38.1	57.2	203	159	59	24	18	22	114	57.1	19.0	24.6	SNA 210-31	SP 210	7.4	

CORROSION RESISTANT