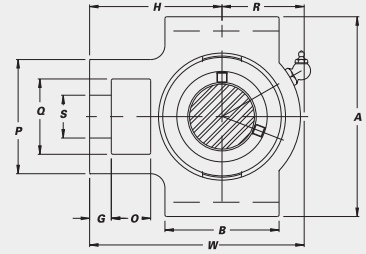
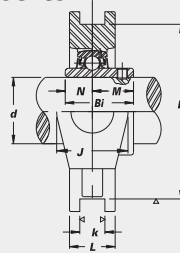


Nickel Plated Take Up Units



Wide slot with optional bearing inserts: Stainless Steel-SUCNPT Hard Chrome Coated-CUCNPT

- B-type Seals
- Available with locking collar bearings. Please ask.
- Overview of corrosion resistant products – pg. 48



CORROSION RESISTANT

Unit No.	Shaft Dia.		Dimensions (in.)															Bearing No.	Housing No.	Weight (lbs.)		
	<i>d</i>	(in.) (mm)	O	G	P	Q	S	B	k	E	A	W	J	L	R	H	Bi				N	M
SUCNPT with Stainless Steel Bearing Inserts																						
SUCNPT 201-8	1/2																			SUC 201-8		
202-10	5/8		5/8	13/32	2	1 1/4	3/4	2	17/32	3	3 1/2	3 11/16	1 1/4	13/16	1 5/16	2 13/32	1.2205	0.5000	0.7205			
204-12	3/4		16	10	51	32	19	51	13.5	76.2	89	94	32	21	33	61	31.0	12.7	18.3		NPT 204	1.7
204		20																				
SUCNPT 205-14	7/8																			SUC 205-14		
205		25	5/8	13/32	2	1 1/4	3/4	2	17/32	3	3 1/2	3 11/16	1 1/4	15/16	1 3/8	2 1/16	1.3386	0.5630	0.7756			
205-16	1		16	10	51	32	19	51	13.5	76.2	89	97	32	24	35	62	34.0	14.3	19.7		NPT 205	1.9
205-16		1																				
SUCNPT 206-18	1 1/8																			SUC 206-18		
206		30	5/8	13/32	2 1/32	1 5/32	55/64	2 1/4	17/32	3 1/2	4 1/32	4 7/16	1 5/32	1 3/32	1 11/16	2 3/4	1.5000	0.6260	0.8740			
206-19	1 3/16		16	10	56	37	22	57	13.5	88.9	102	113	37	28	43	70	38.1	15.9	22.2		NPT 206	2.9
206-20	1 1/4 S																					
SUCNPT 207-20	1 1/4																			SUC 207-20		
207-21	1 5/16		5/8	1/2	2 17/32	1 5/32	55/64	2 17/32	17/32	3 1/2	4 1/32	5 3/32	1 5/32	1 3/16	2	3 1/16	1.6890	0.6890	1.0000			
207-22	1 3/8		16	13	64	37	22	64	13.5	88.9	102	129	37	30	51	78	42.9	17.5	25.4		NPT 207	3.5
207		35																				
207-23	1 7/16																					
SUCNPT 208-24	1 1/2																			SUC 208-24		
208		40	3/4	5/8	3 3/32	1 5/16	1 3/64	3 3/32	1 1/16	4	4 1/2	5 21/32	1 5/16	1 5/16	2 1/32	3 15/32	1.9370	0.7480	1.1890		NPT 208	5.5
208		40	19	16	83	49	29	83	17.5	101.6	114	144	49	33	56	88	49.2	19.0	30.2			
SUCNPT 209-27	1 11/16																			SUC 209-27		
209-28	1 3/4		3/4	5/8	3 3/32	1 5/16	1 3/64	3 3/32	1 1/16	4	4 19/32	5 21/32	1 5/16	1 3/8	2 1/4	3 7/16	1.9370	0.7480	1.1890		NPT 209	5.5
209		45	19	16	83	49	29	83	17.5	101.6	117	144	49	35	57	87	49.2	19.0	30.2			
SUCNPT 210-31	1 5/16																			SUC 210-31		
210		50	3/4	5/8	3 3/32	1 5/16	1 3/64	3 3/8	1 1/16	4	4 19/32	5 7/8	1 5/16	1 5/32	2 5/16	3 17/32	2.0315	0.7480	1.2835		NPT 210	5.7
210-32	2 S		19	16	83	49	29	86	17.5	101.6	117	149	49	37	59	90	51.6	19.0	32.6			
SUCNPT 211-32	2																			SUC 211-32		
211-35	2 3/16		1	3/4	4 1/32	2 17/32	1 3/8	3 3/4	1 1/16	5 1/8	5 3/4	6 23/32	2 17/32	1 1/2	2 9/16	4 3/16	2.1890	0.8740	1.3150		NPT 211	8.8
211-35		25	19	102	64	35	95	27	130.2	146	171	64	38	65	106	55.6	22.2	33.4				
SUCNPT 212-36	2 1/4																			SUC 212-36		
212-39	2 7/16		1 1/4	3/4	4 1/32	2 17/32	1 3/8	4 1/32	1 1/16	5 1/8	5 3/4	7 5/8	2 17/32	1 21/32	2 5/16	4 1 1/16	2.5630	1.0000	1.5630		NPT 212	10.6
212-39		32	19	102	64	35	102	27	130.2	146	194	64	42	75	119	65.1	25.4	39.7				
CUCNPT with Hard Chrome Coated Bearing Inserts																						
CUCNPT 204-12	3/4																			SUC 204-12		
204		20	5/8	13/32	2	1 1/4	3/4	2	17/32	3	3 1/2	3 11/16	1 1/4	13/16	1 5/16	2 13/32	1.2205	0.5000	0.7205		NPT 204	1.7
204		20	16	10	51	32	19	51	13.5	76.2	89	94	32	21	33	61	31.0	12.7	18.3			
CUCNPT 205-14	7/8																			SUC 205-14		
205		25	5/8	13/32	2	1 1/4	3/4	2	17/32	3	3 1/2	3 11/16	1 1/4	15/16	1 3/8	2 1/16	1.3386	0.5630	0.7756		NPT 205	1.9
205-16	1		16	10	51	32	19	51	13.5	76.2	89	97	32	24	35	62	34.0	14.3	19.7			
205-16		1																				
CUCNPT 206-18	1 1/8																			SUC 206-18		
206		30	5/8	13/32	2 1/32	1 5/32	55/64	2 1/4	17/32	3 1/2	4 1/32	4 7/16	1 5/32	1 3/32	1 11/16	2 3/4	1.5000	0.6260	0.8740		NPT 206	2.9
206-19	1 3/16		16	10	56	37	22	57	13.5	88.9	102	113	37	28	43	70	38.1	15.9	22.2			
206-20	1 1/4 S																					
CUCNPT 207-20	1 1/4																			SUC 207-20		
207-22	1 3/8		5/8	1/2	2 17/32	1 5/32	55/64	2 17/32	17/32	3 1/2	4 1/32	5 3/32	1 5/32	1 3/16	2	3 1/16	1.6890	0.6890	1.0000		NPT 207	3.5
207		35	16	13	64	37	22	64	13.5	88.9	102	129	37	30	51	78	42.9	17.5	25.4			
207-23	1 7/16																					
CUCNPT 208-24	1 1/2																			SUC 208-24		
208		40	3/4	5/8	3 3/32	1 5/16	1 3/64	3 3/32	1 1/16	4	4 1/2	5 21/32	1 5/16	1 5/16	2 1/32	3 15/32	1.9370	0.7480	1.1890		NPT 208	5.5
208		40	19	16	83	49	29	83	17.5	101.6	114	144	49	33	56	88	49.2	19.0	30.2			
CUCNPT 209-27	1 11/16																			SUC 209-27		
209-28	1 3/4		3/4	5/8	3 3/32	1 5/16	1 3/64	3 3/32	1 1/16	4	4 19/32	5 21/32	1 5/16	1 3/8	2 1/4	3 7/16	1.9370	0.7480	1.1890		NPT 209	5.5
209		45	19	16	83	49	29	83	17.5	101.6	117	144	49	35	57	87	49.2	19.0	30.2			
CUCNPT 210-31	1 5/16																			SUC 210-31		
210		50	3/4	5/8	3 3/32	1 5/16	1 3/64	3 3/8	1 1/16	4	4 19/32	5 7/8	1 5/16	1 5/32	2 5/16	3 17/32	2.0315	0.7480	1.2835		NPT 210	5.7
210-32	2 S		19	16	83	49	29	86	17.5	101.6	117	149	49	37	59	90	51.6	19.0	32.6			
CUCNPT 211-32	2																			SUC 211-32		
211-35	2 3/16		1	3/4	4 1/32	2 17/32	1 3/8	3 3/4	1 1/16	5 1/8	5 3/4	6 23/32	2 17/32	1 1/2	2 9/16	4 3/16	2.1890	0.8740	1.3150		NPT 211	8.8
211-35		25	19	102	64	35	95	27	130.2	146	171	64	38	65	106	55.6	22.2	33.4				
CUCNPT 212-36	2 1/4																			SUC 212-36		
212-39	2 7/16		1 1/4	3/4	4 1/32	2 17/32	1 3/8	4 1/32	1 1/16	5 1/8	5 3/4	7 5/8	2 17/32	1 21/32	2 5/16	4 1 1/16	2.5630	1.0000	1.5630		NPT 212	10.6
212-39		32	19	102	64	35	102															