

# SUCSP & SNASP Pillow Blocks

## All Stainless Steel



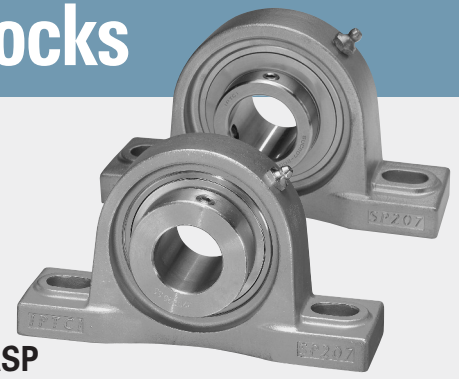
B-type Seal

B-type seal available in all styles and sizes.



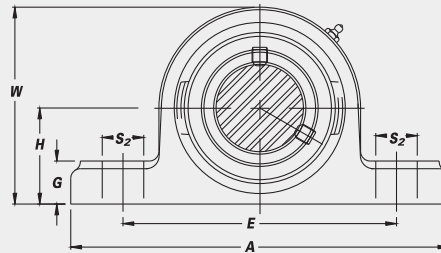
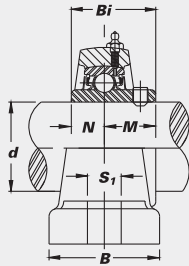
L3-type Seal

L3-type seal available in limited sizes for SUC and SNA. Consult IPTCI for speed limitations.



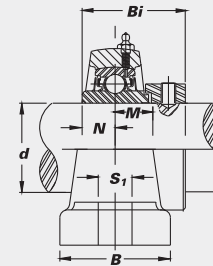
### SUCSP

• Set Screw Locking



### SNASP

• With Eccentric locking Collar



Unit No.	Shaft Dia.		Dimensions (in. (mm))										Bolt Used (in.)	Bearing No.	Housing No.	Weight (lbs.)
	d (in.)	d (mm)	H	A	E	B	S <sub>2</sub>	S <sub>1</sub>	G	W	Bi	N				
<b>SUCSP Set Screw Type</b>																
SUCSP 201-8	1/2	12.7	5	39	38	17	11	15	65	31.0	12.7	18.3	3/8	SUC 201-8	SP 204	1.8
202-10	5/8	33.3	127	95	38	17	11	15	65	31.0	12.7	18.3	3/8	SUC 202-10	SP 204	1.8
SUCSP 204-12	3/4	20	33.3	127	95	38	17	11	15	65	31.0	12.7	3/8	SUC 204-12	SP 204	1.6
204																
SUCSP 205-14	7/8	25	36.5	139	105	38	17	13	16	70	34.0	14.3	3/8	SUC 205-14	SP 205	2.1
205																
205-16	1															
SUCSP 206-18	1 1/8	30	42.9	163	121	47	21	14	18	84	38.1	15.9	1/2	SUC 206-18	SP 206	3.3
206																
206-19	1 3/16															
206-20	1 1/4 S															
SUCSP 207-20	1 1/4	35	47.6	166	127	48	22	14	19	94	42.9	17.5	1/2	SUC 207-20	SP 207	4.2
207-21	1 5/16															
207-22	1 3/8															
207																
207-23	1 7/16															
SUCSP 208-24	1 1/2	40	49.2	184	136	51	22	14	20	100	49.2	19.0	1/2	SUC 208-24	SP 208	5.4
208																
SUCSP 209-27	1 11/16	45	54.0	190	146	52	21	15	20	107	49.2	19.0	1/2	SUC 209-27	SP 209	5.8
209-28	1 3/4															
209																
SUCSP 210-31	1 15/16	50	57.2	203	159	59	24	18	22	114	51.6	19.0	5/8	SUC 210-31	SP 210	7.0
210																
210-32	2 S															
SUCSP 211-32	2		63.5	217	174	60	24	18	22	125	55.6	22.2	5/8	SUC 211-32	SP 211	8.8
211-35	2 3/16															
SUCSP 212-36	2 1/4		69.8	240	187	64	25	20	25	137	65.1	25.4	5/8	SUC 212-36	SP 212	11.2
212-39	2 7/16															
<b>SNASP Eccentric Locking Collar Type</b>																
SNASP 204-12	3/4	20	33.3	127	95	38	17	11	15	65	39.2	12.7	3/8	SNA 204-12	SP 204	1.7
204																
SNASP 205-14	7/8	25	36.5	139	105	38	17	13	16	70	41.2	14.3	3/8	SNA 205-14	SP 205	2.2
205																
205-16	1															
SNASP 206-18	1 1/8	30	42.9	163	121	47	21	14	18	84	46.0	15.9	1/2	SNA 206-18	SP 206	3.4
206																
206-19	1 3/16															
206-20	1 1/4 S															
SNASP 207-20	1 1/4	35	47.6	166	127	48	22	14	19	94	49.8	17.5	1/2	SNA 207-20	SP 207	4.4
207-22	1 3/8															
207																
207-23	1 7/16															
SNASP 208-24	1 1/2	40	49.2	184	136	51	22	14	20	100	53.9	19.0	1/2	SNA 208-24	SP 208	5.6
208																
SNASP 209-28	1 3/4		54.0	190	146	52	21	15	20	107	53.9	19.0	1/2	SNA 209-28	SP 209	6.1
209-28																
SNASP 210-31	1 15/16	50	57.2	203	159	59	24	18	22	114	57.1	19.0	5/8	SNA 210-31	SP 210	7.4
210-32	2 S															

CORROSION RESISTANT