

UCHA Hanger Units



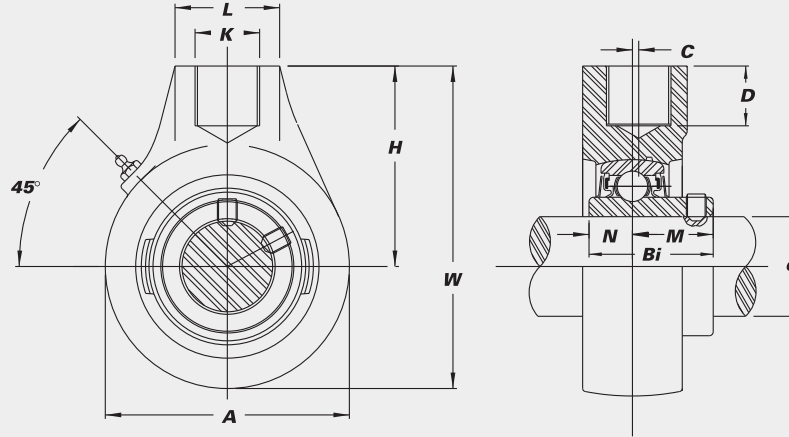
B-type Seal



L3-type Seal

Standard duty with set screw lock.

- Cast iron housing
- Wide inner race bearing
- Available with eccentric locking collar bearing
- B-type seals
- L3-type seals available in some sizes



Unit No.	Shaft Dia.		Dimensions (in.) (mm)									Bearing No.	Housing No.	Weight (lbs.)				
	d (in.)	d (mm)	A	W	C	H	L	D	K	Bi	N				M			
UCHA 201		12														UC 201		
201-8	1/2															201-8		
202		15														202		
202-10	5/8		2 ³³ / ₆₄	3 ²⁵ / ₃₂	0	2 ³³ / ₆₄	1 ⁹ / ₁₆	3/4	PF 3/4	1.2205	0.5000	0.7205			202-10	HA 204	1.7	
203		17	64	96		64	40	19.1	-14	31.0	12.7	18.3			203			
204-12	3/4														204-12			
204		20													204			
UCHA 205-14	7/8															UC 205-14		
205-15	1 ⁵ / ₁₆															205-15		
205		25	3 ¹ / ₁₆	4 ¹ / ₁₆	0	2 ³³ / ₆₄	1 ⁹ / ₁₆	3/4	PF 3/4	1.3386	0.5630	0.7756			205	HA 205	1.9	
205-16	1		78	103		64	40	19.1	-14	34.0	14.3	19.7			205-16			
UCHA 206-17	1 ¹ / ₁₆															UC 206-17		
206-18	1 ¹ / ₈															206-18		
206		30	3 ⁵ / ₃₂	4 ³ / ₃₂	0	2 ³³ / ₆₄	1 ⁹ / ₁₆	3/4	PF 3/4	1.5000	0.6260	0.8740			206	HA 206	1.9	
206-19	1 ³ / ₁₆		80	104		64	40	19.1	-14	38.1	15.9	22.2			206-19			
206-20	1 ¹ / ₄ S														206-20			
UCHA 207-20	1 ¹ / ₄															UC 207-20		
207-21	1 ⁵ / ₁₆															207-21		
207-22	1 ³ / ₈															207-22		
207		35	3 ⁵ / ₈	4 ⁹ / ₁₆	0	2 ³ / ₄	1 ⁹ / ₁₆	3/4	PF 3/4	1.6890	0.6890	1.0000			207	HA 207	2.6	
207-23	1 ⁷ / ₁₆		92	116		70	40	19.1	-14	42.9	17.5	25.4			207-23			
UCHA 208-24	1 ¹ / ₂															UC 208-24		
208-25	1 ⁹ / ₁₆															208-25		
208		40	3 ¹⁵ / ₁₆	4 ²⁷ / ₃₂	5/64	2 ⁷ / ₈	1 ⁹ / ₁₆	3/4	PF 3/4	1.9370	0.7480	1.1890			208	HA 208	3.4	
UCHA 209-26	1 ⁵ / ₈															UC 209-26		
209-27	1 ¹¹ / ₁₆															209-27		
209-28	1 ³ / ₄															209-28		
209		45	4 ¹ / ₄	5 ¹¹ / ₃₂	1 ³ / ₆₄	3 ¹⁵ / ₆₄	1 ⁷ / ₈	1 ³ / ₁₆	PF 1	1.9370	0.7480	1.1890			209	HA 209	3.9	
UCHA 210-30	1 ⁷ / ₈															UC 210-30		
210-31	1 ¹⁵ / ₁₆															210-31		
210		50	4 ²¹ / ₃₂	5 ¹⁹ / ₃₂	1 ³ / ₆₄	3 ¹⁷ / ₆₄	1 ⁷ / ₈	1 ³ / ₁₆	PF 1	2.0315	0.7480	1.2835			210	HA 210	4.6	
210-32	2S		118	142	5	83	48	21	-11 ¹ / ₂	51.6	19.0	32.6			210-32			
UCHA 211-34	2 ¹ / ₈															UC X11-34		
211		55	5 ¹⁹ / ₃₂	6 ¹³ / ₁₆	2 ³ / ₆₄	4 ¹ / ₆₄	2 ³ / ₈	1 ³ / ₃₂	PF 1 ¹ / ₄	2.5630	1.0000	1.5630			211	HA 212	8.5	
211-35	2 ⁹ / ₁₆		142	173	9	102	60	28	-11 ¹ / ₂	65.1	25.4	39.7			211-35			
UCHA 212-36	2 ¹ / ₄															UC 212-36		
212		60	5 ¹⁹ / ₃₂	6 ¹³ / ₁₆	2 ³ / ₆₄	4 ¹ / ₆₄	2 ³ / ₈	1 ³ / ₃₂	PF 1 ¹ / ₄	2.5630	1.0000	1.5630			212	HA 212	8.2	
212-38	2 ⁵ / ₈		142	173	9	102	60	28	-11 ¹ / ₂	65.1	25.4	39.7			212-38			
212-39	2 ⁷ / ₁₆														212-39			
UCHA 214-43	2 ¹¹ / ₁₆															UC X14-43		
214		70	6 ¹⁷ / ₃₂	7 ⁷ / ₈	3/8	4 ³⁹ / ₆₄	2 ³ / ₄	1 ¹ / ₄	PF 1 ¹ / ₂	3.0630	1.3110	1.7520			214	HA 215	13.2	
UCHA 215-47	2 ¹⁵ / ₁₆															UC 215-47		
215		75	6 ¹⁷ / ₃₂	7 ⁷ / ₈	3/8	4 ³⁹ / ₆₄	2 ³ / ₄	1 ¹ / ₄	PF 1 ¹ / ₂	3.0630	1.3110	1.7520			215	HA 215	12.2	
215-48	3		166	200	9.5	117	70	32	-11 ¹ / ₂	77.8	33.3	44.5			215-48			

Interchange Page 47

STANDARD PRODUCTS